

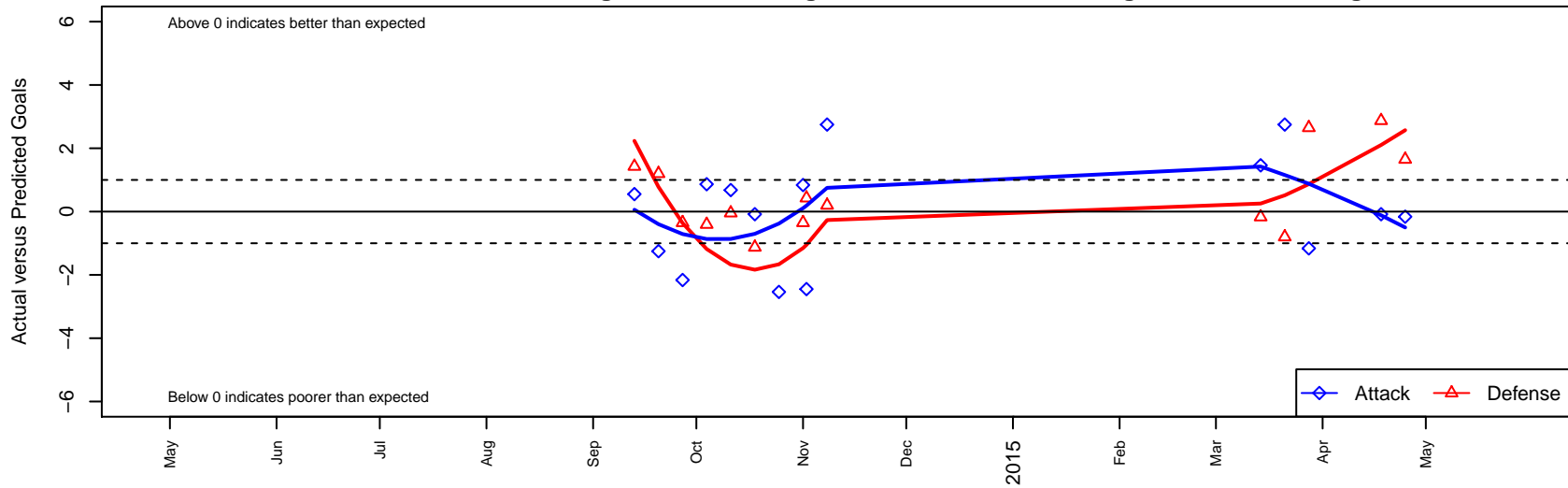
Spokane Pumas Platinum B01

Spokane Pumas FC
 Spokane, WA
 B01 total strength=579
 attack=0.86 defense=0.25
 fall league = PSPL–Inland Div 2 U13
 spr league = Spr PSPL–Inland Div 2 U13
 notes= Triplet 2013

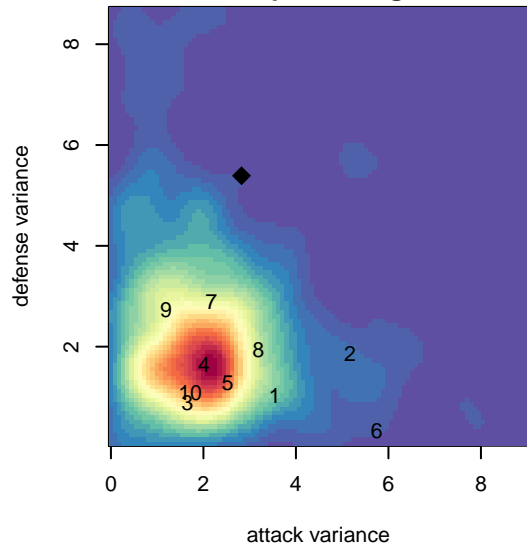
alt names used:
 Spokane Pumas FC Platinum 01'
 Spokane Pumas FC Platinum 01'

Venues played:
 2014 PSPL–Inland Div 2 U13
 2014 Spr PSPL–Inland Div 2 U13

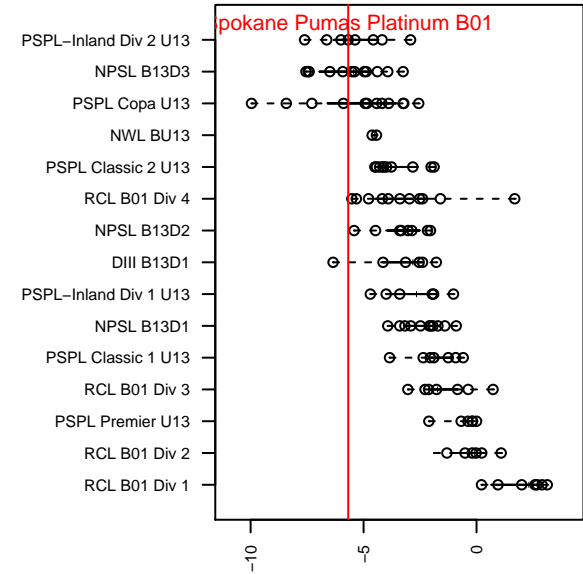
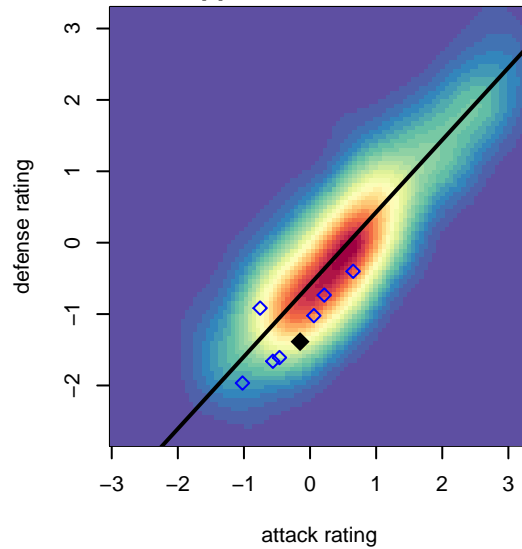
Spokane Pumas Platinum B01
 Dots are actual minus expected GF (blue circles) and GA (red triangles).
 Blue line is smoothed change in attack strength. Red is smoothed change in defense strength.



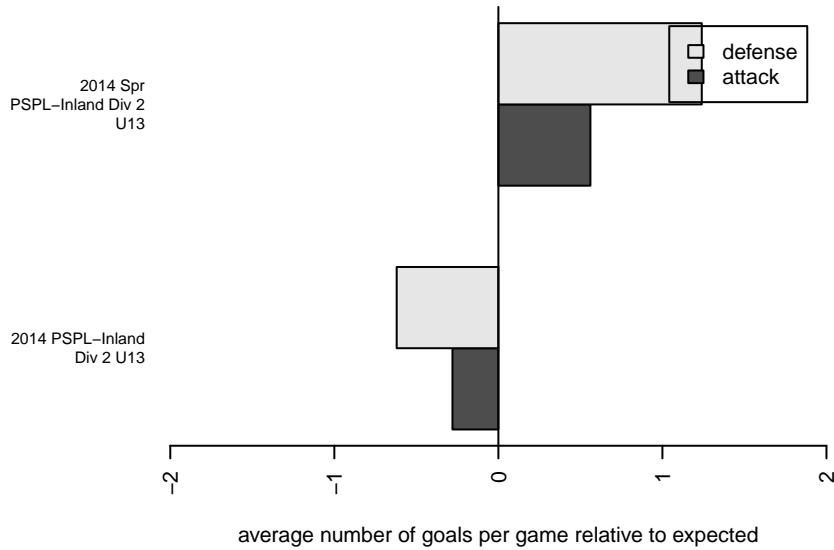
**attack and defense variance (black dot)
relative to other teams
and top 10 in region**



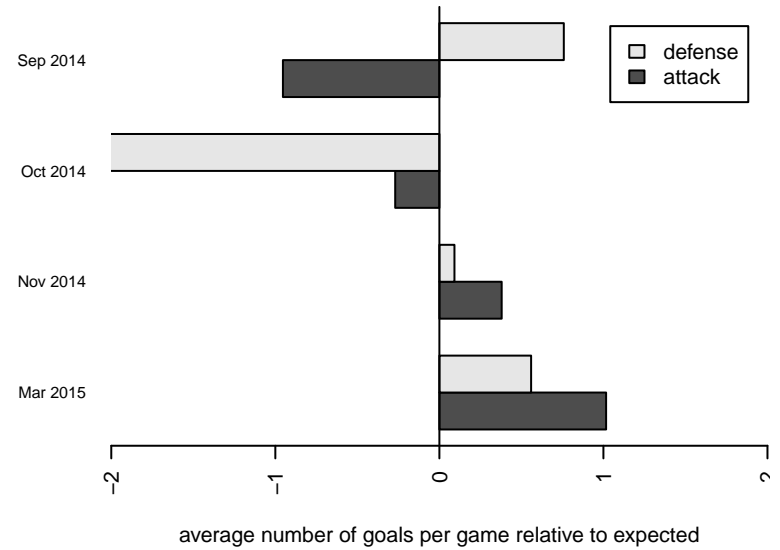
**attack and defense rating
relative to others at age
and all opponents in last 13 months**



Performance relative to 13 month average



Performance relative to 13 month average



date	home		away		venue	pred.home	pred.away
2015-04-25	Spokane Pumas Platinum B01	2	Sabers Torhjelm B01	1	2014 Spr PSPL-Inland Div 2 U13	2.16	2.65
2015-04-18	Spokane Pumas Platinum B01	2	Spokane Scotties Pratt B01	3	2014 Spr PSPL-Inland Div 2 U13	2.08	5.87
2015-03-28	Sabers Torhjelm B01	0	Spokane Pumas Platinum B01	1	2014 Spr PSPL-Inland Div 2 U13	2.65	2.16
2015-03-21	Spokane Pumas Platinum B01	7	Breakers Red B01	3	2014 Spr PSPL-Inland Div 2 U13	4.25	2.20
2015-03-14	FC Spokane Grey Triplett B01	3	Spokane Pumas Platinum B01	5	2014 Spr PSPL-Inland Div 2 U13	2.83	3.54
2014-11-08	Breakers Red B01	2	Spokane Pumas Platinum B01	7	2014 PSPL-Inland Div 2 U13	2.20	4.25
2014-11-02	ASE Royal B01	1	Spokane Pumas Platinum B01	3	2014 PSPL-Inland Div 2 U13	1.43	5.45
2014-11-01	Spokane Pumas Platinum B01	3	Sabers Torhjelm B01	3	2014 PSPL-Inland Div 2 U13	2.16	2.65
2014-10-25	Spokane Pumas Platinum B01	1	FC Spokane Grey Triplett B01	10	2014 PSPL-Inland Div 2 U13	3.54	2.83
2014-10-18	Spokane Scotties Pratt B01	7	Spokane Pumas Platinum B01	2	2014 PSPL-Inland Div 2 U13	5.87	2.08
2014-10-11	Wenatchee Valley United Quincy B01	9	Spokane Pumas Platinum B01	2	2014 PSPL-Inland Div 2 U13	8.95	1.32
2014-10-04	Spokane Pumas Platinum B01	3	FC Spokane Grey B01	5	2014 PSPL-Inland Div 2 U13	2.14	4.59
2014-09-27	Sabers Torhjelm B01	3	Spokane Pumas Platinum B01	0	2014 PSPL-Inland Div 2 U13	2.65	2.16
2014-09-20	Spokane Pumas Platinum B01	3	Breakers Red B01	1	2014 PSPL-Inland Div 2 U13	4.25	2.20
2014-09-13	Spokane Pumas Platinum B01	6	ASE Royal B01	0	2014 PSPL-Inland Div 2 U13	5.45	1.43